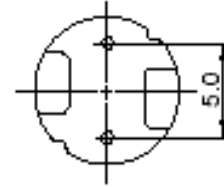
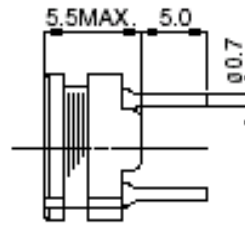
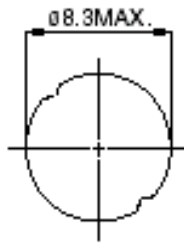


RCH Series Power Inductors

RCH-855

Dimensions(mm)



Specifications

Parts No.	Inductance	DCR.(Max) Typical /Rated DC. Current (A)	Parts No.	Inductance	DCR.(Max) Typical /Rated DC. Current (A)
100	10uH	0.07(0.05)/2.50	821	820uH	3.82(2.97)/0.29
120	12uH	0.08(0.06)/2.40	102	1.0mH	5.28(4.49)/0.25
150	15uH	0.09(0.07)/2.10	122	1.2mH	6.03(4.90)/0.23
180	18uH	0.10(0.08)/2.00	152	1.5mH	7.15(5.97)/0.21
220	22uH	0.12(0.10)/1.70	182	1.8mH	8.26(6.76)/0.20
270	27uH	0.14(0.12)/1.60	222	2.2mH	11.10(9.05)/0.18
330	33uH	0.17(0.13)/1.40	272	2.7mH	13.10(10.3)/0.16
390	39uH	0.21(0.16)/1.30	332	3.3mH	15.90(13.5)/0.14
470	47uH	0.24(0.18)/1.20	392	3.9mH	18.00(15.4)/0.13
560	56uH	0.31(0.25)/1.10	472	4.7mH	23.90(20.4)/0.12
680	68uH	0.34(0.27)/1.00	562	5.6mH	26.80(23.3)/0.11
820	82uH	0.40(0.31)/0.93	682	6.8mH	31.70(27.5)/98m
101	100uH	0.52(0.43)/0.81	822	8.2mH	46.50(35.4)/88m
121	120uH	0.59(0.51)/0.76	103	10mH	55.70(46.8)/81m
151	150uH	0.71(0.61)/0.67	123	12mH	
181	180uH	0.89(0.74)/0.62	153	15mH	
221	220uH	1.04(0.88)/0.54	183	18mH	
271	270uH	1.28(1.16)/0.49	223	22mH	
331	330uH	1.47(1.28)/0.44	273	27mH	
391	390uH	1.67(1.61)/0.41	333	33mH	
471	470uH	1.95(1.72)/0.38	393	39mH	
561	560uH	2.83(2.29)/0.35	473	47mH	
681	680uH	3.25(2.63)/0.32			

Tolerance of Inductance: 10uH-18uH $\pm 20\%$ (M); 22uH-10mH $\pm 10\%$ (K)

Test Frequency: L 10uH-82uH (2.52MHz); 100uH-47mH (1KHz).

This indicates the value of the current when the inductance is 10% lower than its initial value at D.C. superimposition or D.C. current when at $t=40^{\circ}\text{C}$, whichever is lower. ($T_a=20^{\circ}\text{C}$)